



**KÖSTER**

**KÖSTER**

### Important features at a glance:



- Patented product
- Easy application
- Can be applied with caulking gun
- Safe use
- Suitable even in cases of high moisture contents (up to 95%)
- WTA certified
- Against all common capillary rising moisture
- Independent of salt contamination
- Highly concentrated active ingredient
- High efficiency
- High degree of penetration
- Suitable independent of salt content
- Effective damp proof waterproofing course against capillary rising moisture
- Solvent-free
- High stability



The resin / silane based KÖSTER Crisin Cream supports the sustainable renovation of wet walls as a subsequent horizontal barrier and can be used in combination with other KÖSTER products.

#### Complementary products:

KÖSTER KB-Fix 5  
 KÖSTER WP Mortar  
 KÖSTER Polysil TG 500

KÖSTER NB 1 Grey  
 KÖSTER Restoration Plaster  
 KÖSTER Fine Plaster

### KÖSTER at your service – worldwide.



### // Contact us

KÖSTER BAUCHEMIE AG  
 Dieselstraße 1–10 · 26607 Aurich  
 Tel.: +49 4941 9709 0  
 E-Mail: info@koster.eu  
[www.koster.eu](http://www.koster.eu)

Follow us on social media:



Issued: 4/2023



**KÖSTER**  
 Crisin Cream  
 Injection cream against rising damp

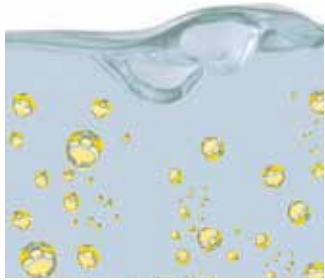


Moisture content up to 95%

Solvent free

Independent of salt contamination

## // KÖSTER Crisin Cream compared to conventional creams



Conventional creams:  
oil-in-water emulsion



KÖSTER Crisin Cream:  
water-in-oil emulsion

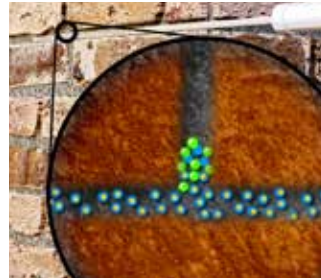
KÖSTER Crisin Cream has the advantage that it is a water-in-oil-emulsion, which means that small water droplets are encased by an oily liquid. Thanks to this property, the water can be displaced from the surfaces of building materials, and the ability to creep and penetrate is much more pronounced than with a water-based cream.



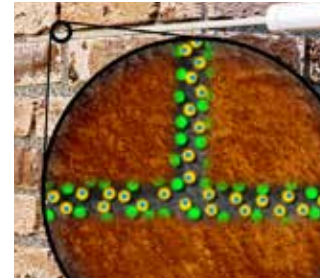
Conventional creams:  
The product mixes with pore water. In the case of damp masonry the active ingredient is diluted, lowering its concentration and the distribution of the active ingredients in the masonry is uncontrolled.



KÖSTER Crisin Cream:  
No mixing of the active ingredients with water due to the reversed formulation. On the contrary, water is bit by bit displaced, the active ingredients remain in the desired position.



Conventional creams:  
Clumping of the ingredients at high salt contents



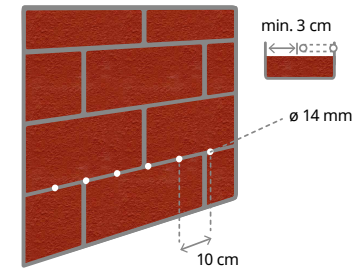
KÖSTER Crisin Cream:  
No clumping of the ingredients with high salt contents

Another advantage is that salts in the masonry do not dissolve in an oily liquid. This makes the product very stable when exposed to salt. Oil-in-water emulsions, which usually break when exposed to salt, and thus clump together, behave in completely opposite ways.

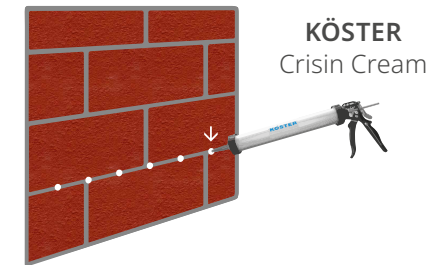


KÖSTER Crisin Cream is firm. This is an advantage when working from cartridges and tubular bags. Even when too much product is applied into the borehole, excess material will not run down onto the plaster that can lead to dark spots afterwards. Excess material can be removed and the borehole subsequently filled and plastered over.

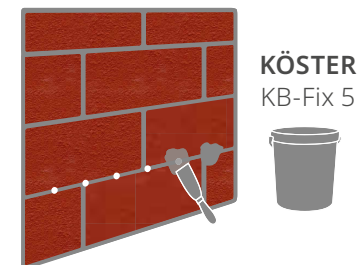
## // Application



- 1 Holes with a diameter of 14 mm are drilled horizontally, ideally in the lowest mortar joint, minimum 3 cm away from the wall end. The holes are cleaned with compressed air. The holes are generally spaced 10 cm apart.



- 2 Then the KÖSTER Crisin Cream is injected using the KÖSTER Special Caulking Gun for the 600 ml tubular bag with the injection tube attached.



- 3 The holes are sealed immediately with KÖSTER KB-Fix 5 flush with the wall surface.